

## Ποιότητες Μελανοταινιών

Ποιότητα	Εκτύπωση	Χρώμα	Περιγραφή	Προδιαγραφές
Wax	Flat Head	001 C	TR 4085 +	Σελίδα 2
Wax	Flat Head	001 C	AS WAX BO	Σελίδα 3
Wax	Flat Head	1787 C	TR 3021 RED	Σελίδα 4
Wax	Flat Head	286 C	TR 3022 BLUE	Σελίδα 5
Wax	Flat Head	3405 C	TR 3023 GREEN	Σελίδα 6
Wax-Resin	Flat Head	001 C	AS WAX RESIN UL	Σελίδα 7
Wax-Resin	Flat Head	185 C	AS WAX RESIN UL RED	Σελίδα 8
Wax-Resin	Flat Head	Green C	AS WAX RESIN UL GREEN	Σελίδα 9
Wax-Resin	Flat Head	3005 C	AS WAX RESIN UL BLUE	Σελίδα 10
Wax-Resin	Flat Head	186 C	AS WAX RESIN RED	Σελίδα 11
Wax-Resin	Flat Head	021 C	AS WAX RESIN ORANGE	Σελίδα 12
Wax-Resin	Flat Head	Green C	AS WAX RESIN GREEN	Σελίδα 13
Wax-Resin	Flat Head	ReflexBlue C	AS WAX RESIN BLUE	Σελίδα 14
Wax-Resin	Near Edge	001 C	AS WAX RESIN NEAR EDGE DIRECT	Σελίδα 15
Wax-Resin	Near Edge	001 C	P110	Σελίδα 16
Wax-Resin	Near Edge	001 C	AS WAX RESIN NEAR EDGE SMD2	Σελίδα 17
Wax-Resin	Near Edge	877 C	AS WAX RESIN NEAR EDGE SILVER	Σελίδα 18
Wax-Resin	Near Edge	3278 C	AS WAX RESIN NEAR EDGE GREEN	Σελίδα 19
Wax-Resin	Near Edge	001 C	AS WAX RESIN NEAR EDGE HS	Σελίδα 20
Wax-Resin	Near Edge	286 C	AS WAX RESIN NEAR EDGE BLUE	Σελίδα 21
Wax-Resin	Near Edge	186 C	AS WAX RESIN NEAR EDGE RED	Σελίδα 22
Wax-Resin	Near Edge		AS WAX RESIN NEAR EDGE WHITE	Σελίδα 23
Wax-Resin	Near Edge	871 C	AS WAX RESIN NEAR EDGE GOLD	Σελίδα 24
Wax-Resin	Near Edge	001 C	AS WAX RESIN NEAR EDGE FLEX	Σελίδα 25
Resin	Flat Head	001 C	D 110 A TEXTIL	Σελίδα 26
Resin	Flat Head	001 C	AS RESIN SUPRA	Σελίδα 27
Resin	Flat Head	001 C	TR 6075	Σελίδα 28



## Data Sheet TR 4085 +

### WAX RIBBON FOR FLAT HEAD PRINTER

Prints on wide variety of substrates from uncoated paper to synthetics paper.  
High sensitivity for high-speed printing up to 300 mm/s.  
Resin-enhanced wax



Technical Specifications	
Type:	Wax Resin
Base Film:	Polyester
Base Film Thickness:	4,8 µ
Colour:	Black
Ribbon Transmission Density:	1.45
Printing Properties	
Print Speed:	300 mm/s
Ink Melt Point:	78°C
Print Density:	1.7
Abrasion Resistance:	ANSI more than C
Solvent Resistance	ANSI more than D
Usage Condition	
ca. 5 – ca. 35°C, 30 – 80 % Relative Humidity	
Storage Condition	
ca. 5 – ca. 35°C, 30 – 80 % Relative Humidity	
Recommended Media	
paper, coated paper, retail tag, PE, PET, etc.	
certificate	
ISEGA certificate, RoHS Directive (2002/95/EC) Conformity	

All information on this data sheet are the best currently available. The values may vary slightly when tested in a different environment. The results should, however, only be regarded as general guide to material properties and not as a guarantee.  
Subject to change without notice.



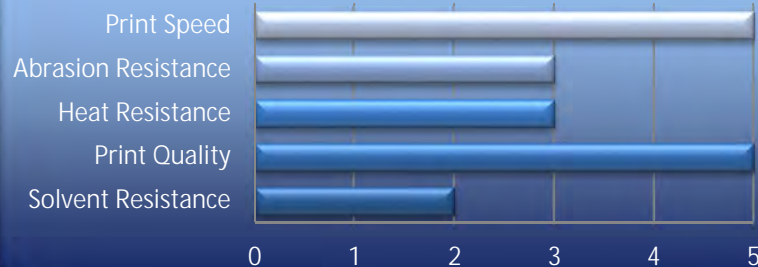
## Data Sheet AS WAX BO

### WAX RIBBON FOR FLAT HEAD PRINTER

Prints on wide variety of substrates from uncoated paper to synthetics paper.  
High sensitivity for high-speed printing up to 300 mm/s.  
For a broad range of printers and materials.



#### Performance Ratings



#### Technical Specifications

Type:	Wax
Base Film:	Polyester
Base Film Thickness:	4,5 µ
Colour:	Black
Ribbon Transmission Density:	> 1.9

#### Printing Properties

Print Speed:	300 mm/s
Ink Melt Point:	70°C
Print Density:	> 2.1
Abrasion Resistance:	ANSI more than C
Solvent Resistance	ANSI more than D

#### Usage Condition

ca. 5 – ca. 35°C, 30 – 80 % Relative Humidity

#### Storage Condition

ca. 5 – ca. 35°C, 30 – 80 % Relative Humidity

#### Recommended Media

paper, coated paper, retail tag, PE, PET, etc.

#### Certificate

ISEGA certificate, RoHS Directive (2002/95/EC) Conformity

All information on this data sheet are the best currently available. The values may vary slightly when tested in a different environment. The results should, however, only be regarded as general guide to material properties and not as a guarantee.  
Subject to change without notice.



## Data Sheet TR 3021 RED

### WAX RIBBON FOR FLAT HEAD PRINTER

Prints on wide variety of substrates, coated and uncoated paper, retail tag, synthetic paper, PE, PET, PP etc.

Prints at high speeds up to 300 mm/s



Technical Specifications	
Type:	Wax
Base Film:	Polyester
Base Film Thickness:	4,8 µ
Colour:	Red, Pantone 1787C
Ribbon Transmission Density:	N/A
Printing Properties	
Print Speed:	300 mm/s
Ink Melt Point:	72°C
Print Density:	N/A
Abrasion Resistance:	ANSI more than C
Solvent Resistance:	ANSI more than D
Usage Condition	
ca. 5 – ca. 35°C, 30 – 80 % Relative Humidity	
Storage Condition	
ca. 5 – ca. 35°C, 30 – 80 % Relative Humidity	
Recommended Media	
Uncoated and coated paper, PE, PET, PP, etc.	
Certificate	
RoHS Directive (2002/95/EC) Conformity	

All information on this data sheet are the best currently available. The values may vary slightly when tested in a different environment. The results should, however, only be regarded as general guide to material properties and not as a guarantee.  
Subject to change without notice.



## Data Sheet TR 3022 BLUE

### WAX RIBBON FOR FLAT HEAD PRINTER

Prints on wide variety of substrates, coated and uncoated paper, retail tag, synthetic paper, PE, PET, PP etc.

Prints at high speeds up to 300 mm/s



Technical Specifications	
Type:	Wax
Base Film:	Polyester
Base Film Thickness:	4,8 µ
Colour:	Blue, Pantone 286C
Ribbon Transmission Density:	N/A
Printing Properties	
Print Speed:	300 mm/s
Ink Melt Point:	72°C
Print Density:	N/A
Abrasion Resistance:	ANSI more than C
Solvent Resistance:	ANSI more than D
Usage Condition	
ca. 5 – ca. 35°C, 30 – 80 % Relative Humidity	
Storage Condition	
ca. 5 – ca. 35°C, 30 – 80 % Relative Humidity	
Recommended Media	
Uncoated and coated paper, PE, PET, PP, etc.	
Certificate	
RoHS Directive (2002/95/EC) Conformity	

All information on this data sheet are the best currently available. The values may vary slightly when tested in a different environment. The results should, however, only be regarded as general guide to material properties and not as a guarantee.  
Subject to change without notice.





## Data Sheet TR 3023 GREEN

### WAX RIBBON FOR FLAT HEAD PRINTER

Prints on wide variety of substrates, coated and uncoated paper, retail tag, synthetic paper, PE, PET, PP etc.

Prints at high speeds up to 300 mm/s



Technical Specifications	
Type:	Wax
Base Film:	Polyester
Base Film Thickness:	4,8 µ
Colour:	Green, Pantone 3405C
Ribbon Transmission Density:	N/A
Printing Properties	
Print Speed:	300 mm/s
Ink Melt Point:	72°C
Print Density:	N/A
Abrasion Resistance:	ANSI more than C
Solvent Resistance:	ANSI more than D
Usage Condition	
ca. 5 – ca. 35°C, 30 – 80 % Relative Humidity	
Storage Condition	
ca. 5 – ca. 35°C, 30 – 80 % Relative Humidity	
Recommended Media	
Uncoated and coated paper, PE, PET, PP, etc.	
Certificate	
RoHS Directive (2002/95/EC) Conformity	

All information on this data sheet are the best currently available. The values may vary slightly when tested in a different environment. The results should, however, only be regarded as general guide to material properties and not as a guarantee.  
Subject to change without notice.



## Data Sheet AS WAX RESIN UL

### WAX RESIN RIBBON FOR FLAT HEAD PRINTER

Prints on wide variety of substrates from uncoated paper to synthetics paper.  
High sensitivity for high-speed printing up to 250 mm/s.  
This product offers a sharper, blacker and more durable print.



Technical Specifications	
Type:	Wax Resin
Base Film:	Polyester
Base Film Thickness:	4,5 µ
Colour:	Black
Ribbon Transmission Density:	>2.0
Printing Properties	
Print Speed:	250 mm/s
Ink Melt Point:	72°C
Print Density:	>2.38
Abrasion Resistance:	ANSI more than B
Solvent Resistance	ANSI more than D
Usage Condition	
ca. 5 – ca. 35°C, 30 – 80 % Relative Humidity	
Storage Condition	
ca. 5 – ca. 35°C, 30 – 80 % Relative Humidity	
Recommended Media	
paper, coated paper, retail tag, PE, PET, etc.	
certificate	
ISEGA certificate, RoHS Directive (2002/95/EC) Conformity	

All information on this data sheet are the best currently available. The values may vary slightly when tested in a different environment. The results should, however, only be regarded as general guide to material properties and not as a guarantee.  
Subject to change without notice.



## Data Sheet AS WAX RESIN UL RED

### WAX RESIN RIBBON FOR FLAT HEAD PRINTER

Prints on wide variety of substrates, coated and uncoated paper, retail tag, synthetic paper, PE, PET, PP etc.

Prints at high speeds up to 250 mm/s



Technical Specifications	
Type:	Wax Resin
Base Film:	Polyester
Base Film Thickness:	4,5 µ
Colour:	Red, Pantone 185 C
Ribbon Transmission Density:	< 2.0
Printing Properties	
Print Speed:	250 mm/s
Ink Melt Point:	72°C
Print Density:	N/A
Abrasion Resistance:	ANSI more than B
Solvent Resistance:	ANSI more than D
Usage Condition	
ca. 5 – ca. 35°C, 30 – 80 % Relative Humidity	
Storage Condition	
ca. 5 – ca. 35°C, 30 – 80 % Relative Humidity	
Recommended Media	
Uncoated and coated paper, PE, PET, PP, etc.	
Certificate	
RoHS Directive (2002/95/EC) Conformity	

All information on this data sheet are the best currently available. The values may vary slightly when tested in a different environment. The results should, however, only be regarded as general guide to material properties and not as a guarantee.  
Subject to change without notice.





## Data Sheet AS WAX RESIN UL GREEN

### WAX RESIN RIBBON FOR FLAT HEAD PRINTER

Prints on wide variety of substrates, coated and uncoated paper, retail tag, synthetic paper, PE, PET, PP etc.

Prints at high speeds up to 250 mm/s



Technical Specifications	
Type:	Wax Resin
Base Film:	Polyester
Base Film Thickness:	4,5 µ
Colour:	Green, Pantone Green C
Ribbon Transmission Density:	<2.0
Printing Properties	
Print Speed:	250 mm/s
Ink Melt Point:	72°C
Print Density:	N/A
Abrasion Resistance:	ANSI more than B
Solvent Resistance:	ANSI more than D
Usage Condition	
ca. 5 – ca. 35°C, 30 – 80 % Relative Humidity	
Storage Condition	
ca. 5 – ca. 35°C, 30 – 80 % Relative Humidity	
Recommended Media	
Uncoated and coated paper, PE, PET, PP, etc.	
Certificate	
RoHS Directive (2002/95/EC) Conformity	

All information on this data sheet are the best currently available. The values may vary slightly when tested in a different environment. The results should, however, only be regarded as general guide to material properties and not as a guarantee.  
Subject to change without notice.



## Data Sheet AS WAX RESIN UL BLUE

### WAX RESIN RIBBON FOR FLAT HEAD PRINTER

Prints on wide variety of substrates, coated and uncoated paper, retail tag, synthetic paper, PE, PET, PP etc.

Prints at high speeds up to 250 mm/s



Technical Specifications	
Type:	Wax Resin
Base Film:	Polyester
Base Film Thickness:	4,5 µ
Colour:	Blue, Pantone 3005 C
Ribbon Transmission Density:	< 2.0
Printing Properties	
Print Speed:	250 mm/s
Ink Melt Point:	72°C
Print Density:	N/A
Abrasion Resistance:	ANSI more than B
Solvent Resistance:	ANSI more than D
Usage Condition	
ca. 5 – ca. 35°C, 30 – 80 % Relative Humidity	
Storage Condition	
ca. 5 – ca. 35°C, 30 – 80 % Relative Humidity	
Recommended Media	
Uncoated and coated paper, PE, PET, PP, etc.	
Certificate	
RoHS Directive (2002/95/EC) Conformity	

All information on this data sheet are the best currently available. The values may vary slightly when tested in a different environment. The results should, however, only be regarded as general guide to material properties and not as a guarantee.  
Subject to change without notice.



## Data Sheet AS WAX RESIN RED

### WAX RESIN RIBBON FOR FLAT HEAD PRINTER

Prints on wide variety of substrates, coated and uncoated paper, retail tag, synthetic paper, PE, PET, PP etc.



Technical Specifications	
Type:	Wax Resin
Base Film:	Polyester
Base Film Thickness:	4,5 µ
Colour:	Red, Pantone 186 C
Ribbon Transmission Density:	N/A
Printing Properties	
Print Speed:	200 mm/s
Ink Melt Point:	80°C
Print Density:	N/A
Abrasion Resistance:	ANSI more than C
Solvent Resistance:	ANSI more than C
Usage Condition	
ca. 5 – ca. 35°C, 30 – 80 % Relative Humidity	
Storage Condition	
ca. 5 – ca. 35°C, 30 – 80 % Relative Humidity	
Recommended Media	
Uncoated and coated paper, PE, PET, PP, etc.	
Certificate	
RoHS Directive (2002/95/EC) Conformity	

All information on this data sheet are the best currently available. The values may vary slightly when tested in a different environment. The results should, however, only be regarded as general guide to material properties and not as a guarantee.  
Subject to change without notice.



## Data Sheet AS WAX RESIN ORANGE

### WAX RESIN RIBBON FOR FLAT HEAD PRINTER

Prints on wide variety of substrates, coated and uncoated paper, retail tag, synthetic paper, PE, PET, PP etc.



Technical Specifications	
Type:	Wax Resin
Base Film:	Polyester
Base Film Thickness:	4,5 µ
Colour:	Orange, Pantone 021 C
Ribbon Transmission Density:	N/A
Printing Properties	
Print Speed:	200 mm/s
Ink Melt Point:	80°C
Print Density:	N/A
Abrasion Resistance:	ANSI more than C
Solvent Resistance:	ANSI more than C
Usage Condition	
ca. 5 – ca. 35°C, 30 – 80 % Relative Humidity	
Storage Condition	
ca. 5 – ca. 35°C, 30 – 80 % Relative Humidity	
Recommended Media	
Uncoated and coated paper, PE, PET, PP, etc.	
Certificate	
RoHS Directive (2002/95/EC) Conformity	

All information on this data sheet are the best currently available. The values may vary slightly when tested in a different environment. The results should, however, only be regarded as general guide to material properties and not as a guarantee.  
Subject to change without notice.



## Data Sheet AS WAX RESIN GREEN

### WAX RESIN RIBBON FOR FLAT HEAD PRINTER

Prints on wide variety of substrates, coated and uncoated paper, retail tag, synthetic paper, PE, PET, PP etc.



Technical Specifications	
Type:	Wax Resin
Base Film:	Polyester
Base Film Thickness:	4,5 µ
Colour:	Green, Pantone Green C
Ribbon Transmission Density:	N/A
Printing Properties	
Print Speed:	200 mm/s
Ink Melt Point:	80°C
Print Density:	N/A
Abrasion Resistance:	ANSI more than C
Solvent Resistance:	ANSI more than C
Usage Condition	
ca. 5 – ca. 35°C, 30 – 80 % Relative Humidity	
Storage Condition	
ca. 5 – ca. 35°C, 30 – 80 % Relative Humidity	
Recommended Media	
Uncoated and coated paper, PE, PET, PP, etc.	
Certificate	
RoHS Directive (2002/95/EC) Conformity	

All information on this data sheet are the best currently available. The values may vary slightly when tested in a different environment. The results should, however, only be regarded as general guide to material properties and not as a guarantee.  
Subject to change without notice.





## Data Sheet AS WAX RESIN BLUE

### WAX RESIN RIBBON FOR FLAT HEAD PRINTER

Prints on wide variety of substrates, coated and uncoated paper, retail tag, synthetic paper, PE, PET, PP etc.



Technical Specifications	
Type:	Wax Resin
Base Film:	Polyester
Base Film Thickness:	4,5 µ
Colour:	Blue, Pantone ReflexBlue
Ribbon Transmission Density:	N/A
Printing Properties	
Print Speed:	200 mm/s
Ink Melt Point:	80°C
Print Density:	N/A
Abrasion Resistance:	ANSI more than C
Solvent Resistance:	ANSI more than C
Usage Condition	
ca. 5 – ca. 35°C, 30 – 80 % Relative Humidity	
Storage Condition	
ca. 5 – ca. 35°C, 30 – 80 % Relative Humidity	
Recommended Media	
Uncoated and coated paper, PE, PET, PP, etc.	
Certificate	
RoHS Directive (2002/95/EC) Conformity	

All information on this data sheet are the best currently available. The values may vary slightly when tested in a different environment. The results should, however, only be regarded as general guide to material properties and not as a guarantee.  
Subject to change without notice.



## Datenblatt AS Wachs Harz Near Edge Direkt

WACHS HARZ FARBBAND FÜR NEAR EDGE DRUCKER

Zum Druck auf beschichteten und unbeschichteten Papieren, Karton, PE, PET, PP, etc.  
Hohe Druckgeschwindigkeit (bis zu 600mm/s)  
Kräftiges Druckbild auch bei hohen Druckgeschwindigkeiten und niedrigen Druckenergie-Einstellungen.



Materialspezifikation	
Typ:	Wachs Harz
Trägermaterial:	Polyesterfilm
Dicke des Trägermaterials:	4,5 µ
Farbe:	Schwarz
Optische Dichte:	>0.90
Druckeigenschaften	
Druckgeschwindigkeit:	600 mm/s
Schmelzpunkt:	70°C
Schwärze (optische Dichte):	> 1.60
Beständigkeit gegen Abrieb:	ANSI Lesbarkeit mehr als C
Lösungsmittelbeständig:	ANSI mehr als C
Einsatzbedingungen	
Bei ca. 5 – ca. 35°C, 30 – 80 % Luftfeuchtigkeit	
Lagerbedingungen	
Bei ca. 5 – ca. 35°C, 30 – 80 % Luftfeuchtigkeit	
Empfohlene Druckmedien	
Beschichtetes und unbeschichtetes Papier, Karton, PE, PET, PP, PVC etc.	
Zertifikate	
ISEGA Zertifikat, RoHS-konform (EG-Richtlinie 2011/65/EU)	

Alle Informationen auf diesem Datenblatt, sind die aktuellsten, die zurzeit zur Verfügung stehen. Die Werte können leicht abweichen, wenn unter anderen Bedingungen getestet wird. Die Ergebnisse sollten jedoch, nur als allgemeiner Leitfaden für die Materialeigenschaften dienen und stellen keine Garantie dar. Änderungen vorbehalten.



## Data Sheet P110

### WAX RESIN RIBBON FOR NEAR EDGE PRINTER

Excellent print density and sharp imprints on a wide range of substrates ideal for date and batch coding.

High sensitivity for high-speed printing up to 600 mm/s.



Technical Specifications	
Type:	Wax Resin
Base Film:	Polyester
Base Film Thickness:	4,5 µ
Colour:	Black
Ribbon Transmission Density:	>0.80
Printing Properties	
Print Speed:	600 mm/s
Ink Melt Point:	70°C
Print Density:	> 1.60
Abrasion Resistance:	ANSI more than C
Solvent Resistance	ANSI more than C
Usage Condition	
ca. 5 – ca. 35°C, 30 – 80 % Relative Humidity	
Storage Condition	
ca. 5 – ca. 35°C, 30 – 80 % Relative Humidity	
Recommended Media	
uncoated and coated paper, PE, PET, PP, etc.	
Certificate	
ISEGA certificate, RoHS Directive (2002/95/EC) Conformity	

All information on this data sheet are the best currently available. The values may vary slightly when tested in a different environment. The results should, however, only be regarded as general guide to material properties and not as a guarantee.  
Subject to change without notice.



## Data Sheet AS WAX RESIN NEAR EDGE SMD2

### WAX RESIN RIBBON FOR NEAR EDGE PRINTER

A premium wax resin ribbon to deliver maximum performance for near edge printers.  
High sensitivity for high-speed printing (600 mm/s).



Technical Specifications	
Type:	Wax Resin
Base Film:	Polyester
Base Film Thickness:	4,5 µ
Colour:	Black
Ribbon Transmission Density:	1.7
Printing Properties	
Print Speed:	600 mm/s
Ink Melt Point:	63°C
Print Density:	1.8
Abrasion Resistance:	ANSI more than C
Solvent Resistance	ANSI more than C
Usage Condition	
ca. 5 – ca. 35°C, 30 – 80 % Relative Humidity	
Storage Condition	
ca. 5 – ca. 35°C, 30 – 80 % Relative Humidity	
Recommended Media	
uncoated and coated paper, PE, PET, PP, etc.	
certificate	
ISEGA certificate, RoHS Directive (2002/95/EC) Conformity	

All information on this data sheet are the best currently available. The values may vary slightly when tested in a different environment. The results should, however, only be regarded as general guide to material properties and not as a guarantee.  
Subject to change without notice.



## Data Sheet AS WAX RESIN NEAR EDGE SILVER

### WAX RESIN RIBBON FOR NEAR EDGE PRINTER

Prints on wide variety of substrates, coated and uncoated paper, retail tag, synthetic paper, PE, PET, PP etc.

High- sensitivity for high-speed printing (250 mm/s). Excellent abrasion resistance.



Technical Specifications	
Type:	Wax Resin
Base Film:	Polyester
Base Film Thickness:	4,5 µ
Colour:	silver, Pantone 877 C
Ribbon Transmission Density:	> 1.6
Printing Properties	
Print Speed:	250 mm/s
Ink Melt Point:	65°C
Print Density:	NA
Abrasion Resistance:	ANSI more than B
Solvent Resistance:	ANSI more than C
Usage Condition	
ca. 5 – ca. 35°C, 30 – 80 % Relative Humidity	
Storage Condition	
ca. 5 – ca. 35°C, 30 – 80 % Relative Humidity	
Recommended Media	
Uncoated and coated paper, PE, PET, PP, etc.	
Certificate	
RoHS Directive (2002/95/EC) Conformity	

All information on this data sheet are the best currently available. The values may vary slightly when tested in a different environment. The results should, however, only be regarded as general guide to material properties and not as a guarantee.  
Subject to change without notice.





Data Sheet  
**AS WAX RESIN NEAR EDGE GREEN**

**WAX RESIN RIBBON FOR NEAR EDGE PRINTER**

A ribbon that delivers maximum performance for printers with near edge print heads.  
Excellent abrasion resistance.



Technical Specifications	
Type:	Wax / Resin
Base Film:	Polyester Film
Base Film Thickness:	4,5 µ
Colour:	green, Pantone 3278 C
Ribbon Transmission Density:	NA
Printing Properties	
Print Speed:	300 mm/s
Ink Melt Point:	70°C
Print Density:	NA
Abrasion Resistance:	ANSI more than B
Solvent Resistance:	ANSI more than C
Usage Condition	
ca. 5 – ca. 35°C, 30 – 80 % Relative Humidity	
Storage Condition	
ca. 5 – ca. 35°C, 30 – 80 % Relative Humidity	
Recommended Media	
coated and uncoated paper, PE, PET,PP etc.	
Certificate	
RoHS Directive (2002/95/EC) Conformity	

All information on this data sheet are the best currently available. The values may vary slightly when tested in a different environment. The results should, however, only be regarded as general guide to material properties and not as a guarantee.  
Subject to change without notice.



## Data Sheet AS WAX RESIN NEAR EDGE HS

### WAX RESIN RIBBON FOR NEAR EDGE PRINTER

A premium wax resin ribbon to deliver maximum performance for near edge printers.  
High sensitivity for high-speed printing (600 mm/s).



Technical Specifications	
Type:	Wax Resin
Base Film:	Polyester
Base Film Thickness:	4,5 µ
Colour:	Black
Ribbon Transmission Density:	> 1.1
Printing Properties	
Print Speed:	600 mm/s
Ink Melt Point:	70°C
Print Density:	1.8
Abrasion Resistance:	ANSI more than C
Solvent Resistance	ANSI more than C
Usage Condition	
ca. 5 – ca. 35°C, 30 – 80 % Relative Humidity	
Storage Condition	
ca. 5 – ca. 35°C, 30 – 80 % Relative Humidity	
Recommended Media	
uncoated and coated paper, PE, PET, PP, etc.	
certificate	
ISEGA certificate, RoHS Directive (2002/95/EC) Conformity	

All information on this data sheet are the best currently available. The values may vary slightly when tested in a different environment. The results should, however, only be regarded as general guide to material properties and not as a guarantee.  
Subject to change without notice.



## Data Sheet AS WAX RESIN NEAR EDGE BLUE

### WAX RESIN RIBBON FOR NEAR EDGE PRINTER

Prints on wide variety of substrates, coated and uncoated paper, retail tag, synthetic paper, PE, PET, PP etc.

High- sensitivity for high-speed printing (300 mm/s). Excellent abrasion resistance.



Technical Specifications	
Type:	Wax Resin
Base Film:	Polyester
Base Film Thickness:	4,5 µ
Colour:	Blue, Pantone 286C
Ribbon Transmission Density:	NA
Printing Properties	
Print Speed:	300 mm/s
Ink Melt Point:	70°C
Print Density:	NA
Abrasion Resistance:	ANSI more than B
Solvent Resistance:	ANSI more than C
Usage Condition	
ca. 5 – ca. 35°C, 30 – 80 % Relative Humidity	
Storage Condition	
ca. 5 – ca. 35°C, 30 – 80 % Relative Humidity	
Recommended Media	
Uncoated and coated paper, PE, PET, PP, etc.	
Certificate	
ISEGA certificate, RoHS Directive (2002/95/EC) Conformity	

All information on this data sheet are the best currently available. The values may vary slightly when tested in a different environment. The results should, however, only be regarded as general guide to material properties and not as a guarantee.  
Subject to change without notice.



## Data Sheet AS WAX RESIN NEAR EDGE RED

### WAX RESIN RIBBON FOR NEAR EDGE PRINTER

Prints on wide variety of substrates, coated and uncoated paper, retail tag, synthetic paper, PE, PET, PP etc.

High- sensitivity for high-speed printing (300 mm/s). Excellent abrasion resistance.



Technical Specifications	
Type:	Wax Resin
Base Film:	Polyester
Base Film Thickness:	4,5 µ
Colour:	red, Pantone 186C
Ribbon Transmission Density:	NA
Printing Properties	
Print Speed:	300 mm/s
Ink Melt Point:	70°C
Print Density:	NA
Abrasion Resistance:	ANSI more than B
Solvent Resistance:	ANSI more than C
Usage Condition	
ca. 5 – ca. 35°C, 30 – 80 % Relative Humidity	
Storage Condition	
ca. 5 – ca. 35°C, 30 – 80 % Relative Humidity	
Recommended Media	
Uncoated and coated paper, PE, PET, PP, etc.	
Certificate	
RoHS Directive (2002/95/EC) Conformity	

All information on this data sheet are the best currently available. The values may vary slightly when tested in a different environment. The results should, however, only be regarded as general guide to material properties and not as a guarantee.  
Subject to change without notice.



## Data Sheet AS WAX RESIN NEAR EDGE WHITE

### WAX RESIN RIBBON FOR NEAR EDGE PRINTER

Prints on wide variety of substrates, coated and uncoated paper, retail tag, synthetic paper, PE, PET, PP etc.

High- sensitivity for high-speed printing (300 mm/s). Excellent abrasion resistance.



Technical Specifications	
Type:	Wax Resin
Base Film:	Polyester
Base Film Thickness:	4,5 µ
Colour:	White
Ribbon Transmission Density:	n. a.
Printing Properties	
Print Speed:	300 mm/s
Ink Melt Point:	70°C
Print Density:	n. a.
Abrasion Resistance:	ANSI more than C
Solvent Resistance:	ANSI more than C
Usage Condition	
ca. 5 – ca. 35°C, 30 – 80 % Relative Humidity	
Storage Condition	
ca. 5 – ca. 35°C, 30 – 80 % Relative Humidity	
Recommended Media	
Uncoated and coated paper, PE, PET, PP, etc.	
Certificate	
RoHS Directive (2002/95/EC) Conformity	

All information on this data sheet are the best currently available. The values may vary slightly when tested in a different environment. The results should, however, only be regarded as general guide to material properties and not as a guarantee.  
Subject to change without notice.





## Data Sheet AS WAX RESIN NEAR EDGE GOLD

### WAX RESIN RIBBON FOR NEAR EDGE PRINTER

Prints on wide variety of substrates, coated and uncoated paper, retail tag, synthetic paper, PE, PET, PP etc.

High- sensitivity for high-speed printing (250 mm/s). Excellent abrasion resistance.



Technical Specifications	
Type:	Wax Resin
Base Film:	Polyester
Base Film Thickness:	4,5 µ
Colour:	gold, Pantone 971C
Ribbon Transmission Density:	NA
Printing Properties	
Print Speed:	250 mm/s
Ink Melt Point:	72°C
Print Density:	NA
Abrasion Resistance:	ANSI more than B
Solvent Resistance:	ANSI more than C
Usage Condition	
ca. 5 – ca. 35°C, 30 – 80 % Relative Humidity	
Storage Condition	
ca. 5 – ca. 35°C, 30 – 80 % Relative Humidity	
Recommended Media	
Uncoated and coated paper, PE, PET, PP, etc.	
Certificate	
RoHS Directive (2002/95/EC) Conformity	

All information on this data sheet are the best currently available. The values may vary slightly when tested in a different environment. The results should, however, only be regarded as general guide to material properties and not as a guarantee.  
Subject to change without notice.



Data Sheet  
**AS WAX RESIN NEAR EDGE FLEX**

**WAX RESIN RIBBON FOR NEAR EDGE PRINTER**

Prints on coated, uncoated paper, synthetics paper, PE, PET, PP, etc.  
Excellent resistance to abrasion. High-speed printing up to 600 mm/s.



Technical Specifications	
Type:	Wax Resin
Base Film:	Polyester
Base Film Thickness:	4,5 µ
Colour:	Black
Ribbon Transmission Density:	N/A
Printing Properties	
Print Speed:	600 mm/s
Ink Melt Point:	70°C
Print Density:	N/A
Abrasion Resistance:	ANSI more than C
Solvent Resistance	ANSI more than B
Usage Condition	
ca. 5 – ca. 35°C, 30 – 80 % Relative Humidity	
Storage Condition	
ca. 5 – ca. 35°C, 30 – 80 % Relative Humidity	
Recommended Media	
uncoated and coated paper, PE, PET, PP, etc.	
Certificate	
ISEGA certificate, RoHS Directive (2002/95/EC) Conformity	

All information on this data sheet are the best currently available. The values may vary slightly when tested in a different environment. The results should, however, only be regarded as general guide to material properties and not as a guarantee.  
Subject to change without notice.



## Data Sheet D 110 A TEXTILE

### RESIN RIBBON FOR FLAT HEAD PRINTER

Prints on nylon, polyester, acetate, etc.  
Superb smear resistance even at temperature as high as 150°C  
Image will not blur even with ironing.  
Printing image durable against water and dry cleaning.



Technical Specifications	
Type:	Resin
Base Film:	Polyester
Base Film Thickness:	4,5 µ
Colour:	Black
Ribbon Transmission Density:	> 1.0
Printing Properties	
Print Speed:	150 mm/s
Ink Melt Point:	83°C
Print Density:	> 1.27 ± 0,2
Standard wash (40°C) ISO C06A1M	ANSI more than B
Standard wash (60°C) ISO C06A1M	ANSI more than B
Usage Condition	
ca. 5 – ca. 35°C, 30 – 80 % Relative Humidity	
Storage Condition	
ca. 5 – ca. 35°C, 30 – 80 % Relative Humidity	
Recommended Media	
Nylon, polyester, acetate, etc.	
Certificate	

TSCA (Toxic Substances Control Act), Directive 76/769/EC; 2003/11/EC; 2000/53/EC, ISO EN71-3, Directive RoHS

All information on this data sheet are the best currently available. The values may vary slightly when tested in a different environment. The results should, however, only be regarded as general guide to material properties and not as a guarantee.  
Subject to change without notice.



## Data Sheet AS RESIN SUPRA

### RESIN RIBBON FOR FLAT HEAD PRINTER

AS RESIN SUPRA ribbons provide the highest levels of resistance to abrasion, heat (300°C on polyamide film). Prints exceptionally on high end films including polyester, vinyl and polyamide.



Technical Specifications	
Type:	Resin
Base Film:	Polyester
Base Film Thickness:	4,5 µ
Colour:	Black
Ribbon Transmission Density:	> 1.0
Printing Properties	
Print Speed:	150 mm/s
Ink Melt Point:	110°C
Print Density:	NA
Abrasion Resistance:	ANSI more than A
Solvent Resistance	ANSI more than A
Usage Condition	
5 to 35°C, 30 – 80 % Relative Humidity	
Storage Condition	
5 to 35°C, 30 – 80 % Relative Humidity	
Recommended Media	
coated paper, PE, PET, etc.	
certificate	
ISEGA certificate, UL approved, RoHS Directive (2002/95/EC) Conformity	

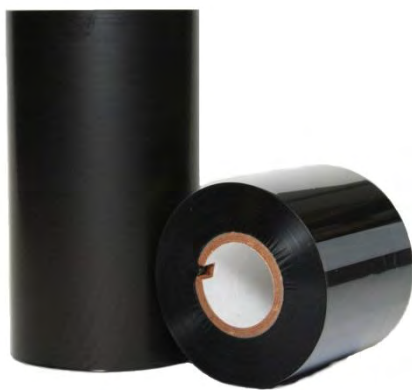
All information on this data sheet are the best currently available. The values may vary slightly when tested in a different environment. The results should, however, only be regarded as general guide to material properties and not as a guarantee.  
Subject to change without notice.



## Data Sheet TR 6075

### RESIN RIBBON FOR FLAT HEAD PRINTER

Prints on coated paper, PE, PET, PVC, PP etc.  
High sensitivity for high speed printing up to 200 mm/s.  
Extreme durability and solvent resistance



Technical Specifications	
Type:	Resin
Base Film:	Polyester
Base Film Thickness:	4,5 µ
Colour:	Black
Ribbon Transmission Density:	1.4
Printing Properties	
Print Speed:	200 mm/s
Ink Melt Point:	86°C
Print Density:	1.80
Abrasion Resistance:	ANSI more than B
Solvent Resistance	ANSI more than B
Usage Condition	
5 to 35°C, 30 – 80 % Relative Humidity	
Storage Condition	
5 to 35°C, 30 – 80 % Relative Humidity	
Recommended Media	
coated paper, retail tag, PE, PET, PP, PVC etc.	
Certificate	
UL recognized, RoHS Directive (2002/95/EC) Conformity	

All information on this data sheet are the best currently available. The values may vary slightly when tested in a different environment. The results should, however, only be regarded as general guide to material properties and not as a guarantee.  
Subject to change without notice.